



# Essilor Anti-Fatigue™ Advanced Single Vision Lenses

Relief for hard-working eyes



## FOCUS ON VISUAL FATIGUE

Eyes that sting and feel tight, headaches, blurred vision: these are all ways of describing VISUAL FATIGUE.



- **Visual fatigue** is a problem that busy people are acutely aware of. It affects more than **60%\* of individuals**, whether their eyesight is corrected or not
- This is a phenomenon caused by many factors related to our lifestyle and activities, which increasingly require the **prolonged use of intermediate/near vision**. Visual fatigue is a **frequent occurrence** that many patients experience every day

Essilor has launched the **first anti-fatigue prescription lens** for all single vision wearers whatever their correction, and more specifically wearers aged 20 to 45 who suffer from visual fatigue.

\* Source: Omnibus/BVA surveys conducted for Essilor in October 2004 on a sample of 2,760 people aged between 20 and 45 years old (wearers and non-wearers) in France, the United States and Japan.

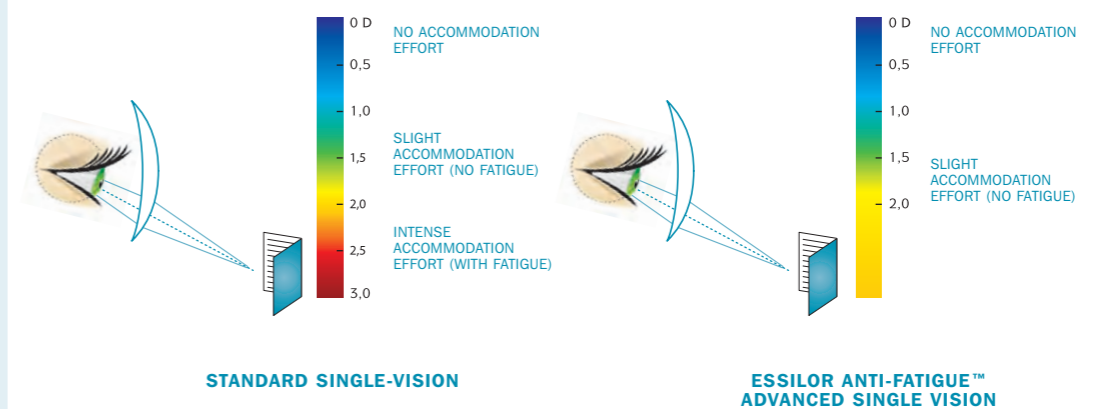
## ESSILOR ANTI-FATIGUE™ LENSES: AN UNPRECEDENTED INNOVATION

- **Essilor Anti-Fatigue™** is a new-generation of advanced single vision prescription lenses that give relief to hard-working eyes in addition to correcting their vision
- **Its patented design** supports the wearer's accommodation efforts and thus relieves **visual fatigue**, thanks to:
  - a slight additional plus power at near vision
  - optimal aspherisation for instant adaptation
- The lens provides much greater comfort than a standard single-vision correction, as the wearers' **natural accommodation pattern is retained**
- What's more, **Essilor Anti-Fatigue™** lenses are available with a **Crizal Alizé** coating for greater transparency and better contrast

PERFECT WITH **Crizal ALIZÉ™**

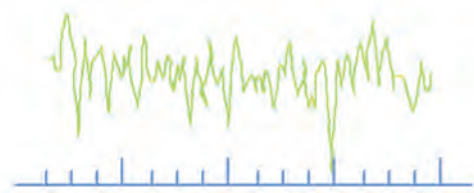
**Essilor Anti-Fatigue™** lenses require less accommodation effort at close range compared to a standard single-vision lens.

### MEASUREMENT OF NEAR-VISION ACCOMMODATION EFFORT



## THE ANTI-FATIGUE™ EFFECT: HOW DOES IT WORK?

### NORMAL STATE



HIGH AMPLITUDE  
OF MICRO-FLUCTUATIONS

When the eye focuses on a fixed target, the resulting accommodation is not constant: it varies around an average value, like with an auto-focus camera. These variations are called **accommodative micro-fluctuations**; they are imperceptible and uncontrollable.

### VISUAL FATIGUE

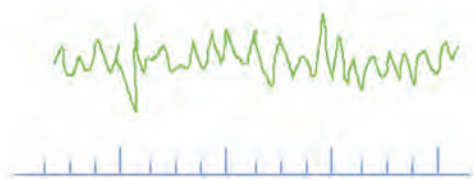


LOW AMPLITUDE  
OF MICRO-FLUCTUATIONS

THE ACCOMMODATION SYSTEM HAS  
DIFFICULTY SUSTAINING ITS EFFORT

When the eyes get tired, these micro-fluctuations practically disappear, which shows that the accommodation system has greater difficulty sustaining its effort. **These micro-fluctuations provide the best objective evidence of visual fatigue.**

### ANTI-FATIGUE EFFECT



THANKS TO **ESSILOR ANTI-FATIGUE™ LENSES**,  
THE ACCOMMODATION SYSTEM  
REGAINS ITS BALANCE

**Essilor Anti-Fatigue™ lenses help to restore the micro-fluctuations and retain the balance of the accommodative system, for fatigue-free vision.**

## ESSILOR ANTI-FATIGUE™ LENSES: WHO BENEFITS MOST?

- Patients between the age of 20 and 45 (pre-presbyopic age)
- Patients that spend more than 3 hours a day working at close range e.g. reading, computer work etc
- Patients that complain about experiencing visual fatigue whether they wear prescription spectacles or not

Please note Essilor Anti-Fatigue™ advanced single vision lenses are unsuitable for patients under 16 and patients with significant exophoria.



- **Essilor Anti-Fatigue™** lenses completely replace standard prescription lenses whatever the patient's ametropia, without changing their natural behaviour, whether they are permanent or occasional wearers
- **Essilor Anti-Fatigue™** has a slight built-in variation in power (+0.60 D) to support the wearers accommodation for close range tasks throughout the day



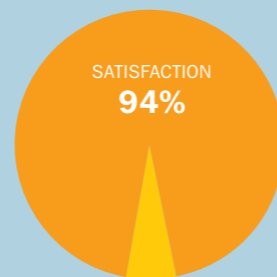
# CLINICAL TESTS: PROVEN EFFECTIVENESS



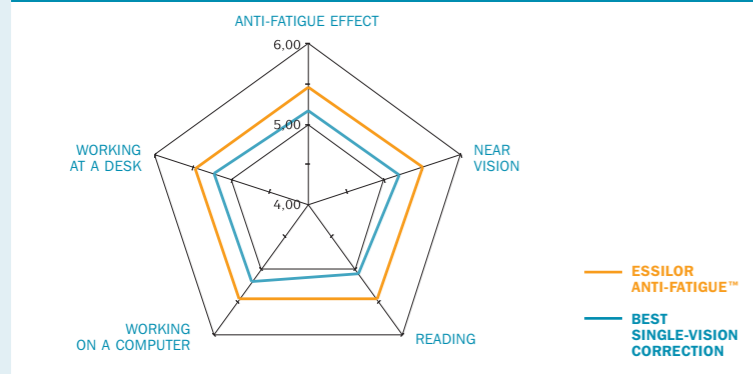
We compared **Essilor Anti-Fatigue™** advanced single vision lenses to a standard single-vision lens (same index, correction and anti-reflective coating) in a double blind study\*.

**These clinical tests proved the clear superiority of Essilor Anti-Fatigue™ lenses:**

- **Essilor Anti-Fatigue™** lenses were used in exactly the same way as their current spectacles (constant or occasional use)
- Adaptation was as fast and easy as with a standard single-vision lens
- 94% of wearers were totally satisfied with regard to near, distance and dynamic vision alike



**ON A SCALE OF 1 TO 6**  
(1 = VERY POOR, 6 = VERY GOOD)



**7 out of 10 wearers** preferred this lens to the best single-vision correction\*\* for its visual comfort, the quality of its near vision correction and its anti-fatigue properties.

\* Wearer test conducted by Anglia Ruskin University (Spring 2004 - 98 wearers aged 20-45)

\*\* Stylis Crizal lenses with identical prescriptions

# TECHNICAL FEATURES

## Lens Design

- **Aspheric design advanced single vision lenses, with an additional +0.60 D in the lower power of the lens**
- **No perceivable distortions**

## Ordering

Use full distance Rx.

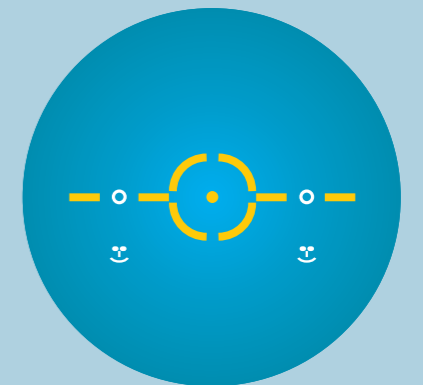
## Markings and Engravings

### Horizontal Centration

Use monocular distance PD.

### Vertical Centration

Line up the mounting reference point with the pupil centre. (The mounting reference point can be located up to 2mm below the pupil). Specify R and L fitting height when ordering.



**ENGRAVED LENSES FOR EASIER IDENTIFICATION**



**Essilor Anti-Fatigue™**



## Essilor Anti-Fatigue™ Range

MATERIAL	CRIZAL ALIZÉ	TRIO GREEN	SUPRA	UNCOATED	DIAMETER	POWERS
ORMA 1.5	YES	YES	YES	YES	60,65,70,75	-6.00 TO +6.00 CYLS TO 4.00
STYLIS 1.67	YES	NO	NO	NO	65,70,75	-10.00 TO +6.00 CYLS TO 4.00

## Where to order Essilor Anti-Fatigue™ Lenses

Essilor Anti-Fatigue lenses can be ordered directly from Essilor, through a Varilux Specialist Laboratory or a Wholesale Glazing Partner.

Issue Code 06.06

ESSILOR LIMITED, COOPER ROAD, THORNBURY, BRISTOL BS35 3UW  
**WWW.ESSILOR.CO.UK**  
GENERAL ENQUIRIES 01454 417100

57-02-016

